

Catalogue ID	Manufacturer	IO Auth
AIR01-ML-NF	Precision ADM Inc.	320273
AIR01-SM-NF	Precision ADM Inc.	320273

## Reprocessing Instructions

Visually inspect mask components before donning and after doffing. If mask is visibly soiled, decontaminate and disinfect reusable components (fig. A) per instructions below, and discard disposable components (fig. B). In absence of visible contamination, reusable components (fig. A) should still be wipe disinfected after each doff per instructions below.

Completely decontaminate and disinfect reusable components (fig. A) and replace disposable components (fig. B) daily, at minimum.

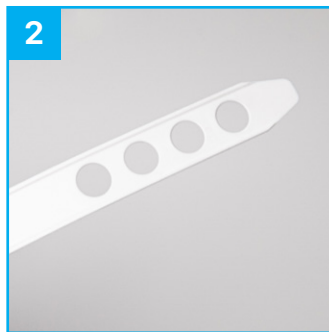
For use in healthcare setting, consult on-site Infection Control experts for additional information on reprocessing frequency. If, during normal use, breathing becomes difficult, doff mask, and replace disposable filter components.

The following reprocessing methods can be conducted up to 60 times on reusable mask components before replacement.

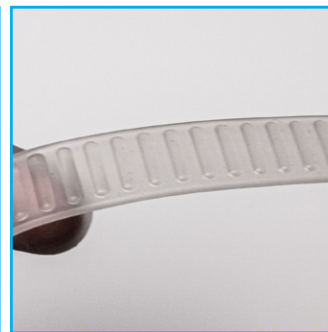
### Critical Features – take extra care to scrub/wipe these types of features:



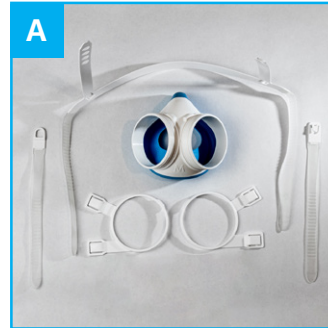
1 Circular surface markings.



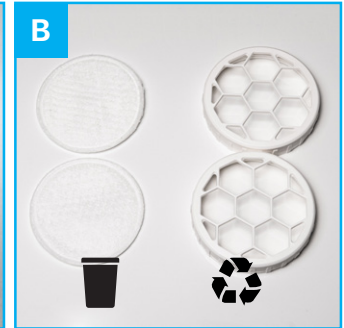
2 Corners, tight features (For wiping, fold the wipe over and use the edge where necessary).



## Dissassembly



Don **clean gloves** and disassemble the full mask assembly on a clean surface.



If deemed contaminated, discard **filters** and dispose of recyclable **filter caps**.

## Decontamination

Decontamination is recommended prior to disinfection of soiled masks. A detergent bath can be prepared per the following instructions:

Instructions	Conditions
<ul style="list-style-type: none"> <li>Thoroughly rinse all visibly contaminated surfaces of component under cold tap water (&lt;18C)</li> <li>Submerge all components in detergent bath for 3 minutes minimum before removing first part for scrubbing.</li> <li>Don clean gloves if previous set was contaminated through direct contact.</li> <li>Submerge nylon brush in detergent bath to wet it. Remove individual components and scrub all surfaces with back and forth motion. Use free, gloved hand as backing for soft deformable surfaces on straps and face seal to facilitate scrubbing.</li> <li>Set aside components in dry staging area rather than returning them to detergent bath. Rinse and re-wet nylon brush in between scrubbing each component.</li> <li>Upon completion of scrubbing, rinse all parts thoroughly with tap water (minimum 30 seconds per part) and visually assess each component. If visual evidence of residual soil is identified, re-submerge brush, and scrub those locations directly until visibly clean.</li> <li>Cloth dry parts with a sanitized cloth or air dry before proceeding.</li> </ul>	<p>Detergent bath should be prepared with the following:</p> <ul style="list-style-type: none"> <li>Water Recommended conditions: 44°C tap water, 7.5 pH</li> <li>Prepare bath using a diluted healthcare grade neutral foaming detergent intended for manual decontamination. Ensure concentration used for selected detergent is effective and does not cause any degradation to the mask.</li> </ul>

Catalogue ID	Manufacturer	IO Auth
AIR01-ML-NF	Precision ADM Inc.	320273
AIR01-SM-NF	Precision ADM Inc.	320273

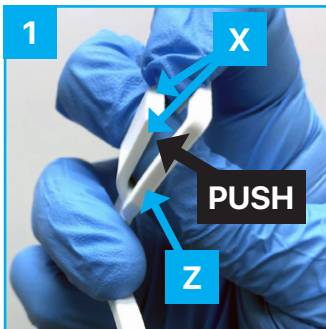
## Disinfection

Disinfection is recommended prior to donning, and should be carried out as part of a full reprocessing step when mask becomes visually contaminated. When conducted intermittently on clean, reusable components, wiping per the instructions below can be effective at reducing the prevalence of up to 99%<sup>1</sup> of microbes indicated on recommended disinfectant's label claims.

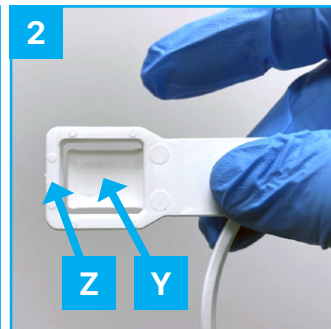
Information	Disinfectant	Contact Time
For all wipe steps described below, the minimum contact time for each surface is 1 minute to ensure disinfection efficacy per product label claims. It is recommended that the user proceed with each individual step and assess the surface to ensure disinfectant remains wet for a full minute before proceeding further. If required, re-wet surface, alternating opposing sides of wipe as necessary until 1-minute contact time is assured.	Recommended wipe: Oxivir Tb Wipe <sup>2</sup>	1 Minute Minimum

## Strap Harness Wiping

With a fresh wipe, fold the wipe over and wipe each individual surface of the ring-shaped feature of the harness, ensuring the wipe reaches each edge and crevice. For wiping of the strap tightening features, using a clean glove, wipe using the following approach:



Push the clip away from its frame to access the tight edges of the harness with the wipe. Wipe down normally inaccessible edges (X).



Wipe the location contacted by finger (Y).



Wipe remaining outside surfaces (Z).



Repeat steps 1-3 as needed to ensure 1-minute wetting time.

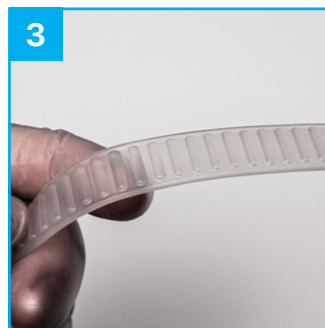
## Strap and Head Halo Wiping



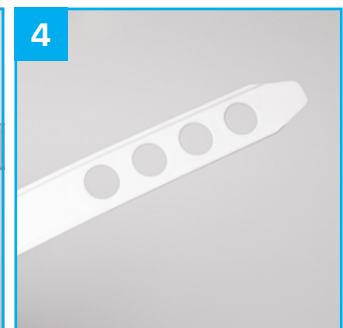
Use a **fresh wipe** for the **straps** and one for the **head halo**. First, wipe along the length of the hard plastic and elastic strap features.



Next, wipe down any of the noted **Critical Features** such as circular surface markings, corners, and tight features. For wiping, fold the wipe over and use the edge where necessary.



Fold the wipe over, and carefully wipe in between the strap ribs.



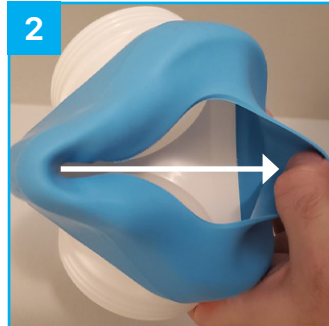
Finally, specifically for the head halo component, curl over the folded wipe to access the snap feature internal surfaces.

Catalogue ID	Manufacturer	IO Auth
AIR01-ML-NF	Precision ADM Inc.	320273
AIR01-SM-NF	Precision ADM Inc.	320273

### Mask Body Wiping



Use a single wipe as a barrier while holding onto the mask by the threads, and use a fresh wipe in the opposing hand to wipe inside of seal and internal hard plastic surfaces.



Wipe in the direction of the seal edges as shown.



With an additional wipe, wipe down the outer surface of the face seal followed by the filter ports.



Wipe down each thread. Continue to hold the mask by the opposing thread using the same unused wipe as a barrier when transitioning between holding locations. With wiping hand, fold the wipe as necessary to ensure adequate contact with thread crevices.



Wipe down the remainder of the hard-plastic mask body.



Perform final wiping step of the unthreaded surfaces away from threads as shown.



Conduct thorough final rinse of all components using tap water.

# PRECISION

# AIR™

## Contact

### Head Office

Unit A – 1595 Buffalo Place  
Winnipeg, MB  
Canada, R3T 1L9

+1 855 500 PADM (7236)  
info@padmmedical.com

### Québec Office

Unit A – 274 Chemin Industriel  
Gatineau, QC  
Canada, J8R 3N9

+1 819 230 7350  
info@padmmedical.com

### Latin America

+57 322 228 0356  
info@padmmedical.com

<sup>1</sup> 99% efficacy claim per a represented 2-log reduction of vegetative bacteria cells and mycobacteria tested in a lab setting. Real world conditions may not reflect lab results if wiping is not conducted exactly in accordance with recommended instructions. For assurance of disinfection results per label claim, a decontamination step is recommended prior to wipe.

<sup>2</sup> Other disinfecting wipes may be effective, however, Precision ADM has not validated the use of wipes other than the one indicated, alternative disinfectants should be properly evaluated for effectiveness and validated prior to use.



Precision AIR™ is designed by PADM Medical™ and manufactured in Canada by Precision ADM®.  
Precision AIR™ and PADM Medical™ are trademarks of Precision ADM Inc.  
VPRO® is a registered trademark of STERIS.  
Unit A – 1595 Buffalo Place, Winnipeg, MB, Canada R3T 1L9 1 855 593 2729  
www.padmmedical.com

20053-IFU-REPROCESSING-REV03

